

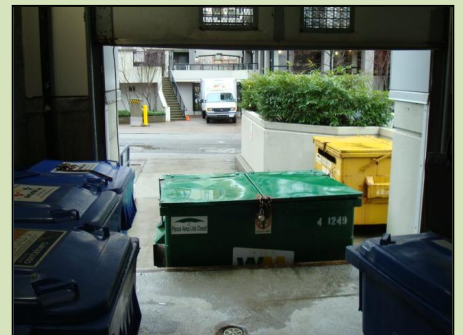
AtSource Recycling Systems Corp., a leading supplier of Waste & Recycling equipment works closely with commercial, industrial and government organizations across Canada to reduce landfill waste, increase commodity recycling and decrease waste & recycling expenses.

In Vancouver large high-rise strata buildings abound and can have significant issues when dealing with their waste and recycling. In particular these locations have very little room to house typical open top containers and even less time to worry about the management of their waste.

AtSource Recycling Systems is able to provide new, cost effective equipment suggestions to solve the problems many strata buildings endure with their waste.

In one such case the high-rise apartment complex was using an open-top container for waste collection, a common occurrence. The typical open top container, while having it usefulness, was extremely inadequate for an application such as this with medium to high volume, limited space and public accessibility. Further the process to transfer waste into the container required staff to open a large "loading dock" rollup door, open the container, empty the waste then close/lock the container etc. This process was time consuming, hazardous and not cost effective.

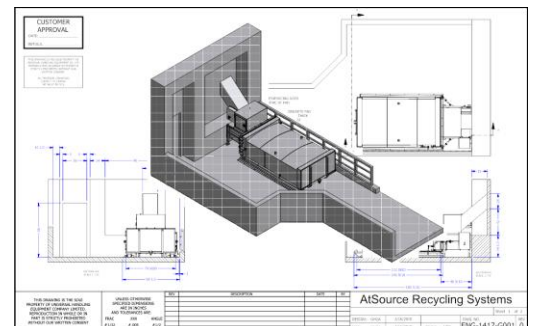
- **Hazardous handling concerns**
- **Collection services were extremely disruptive to tenants**
- **Unsightly conditions and odor issues**
- **High costs**
- **Frequent hauling services creating additional expense and environmental issues**



After initial consultation and investigation, several recommendations were proposed and implemented.

AtSource Solution:

- Implement a high compaction self-contained receptacle
- Install a custom, self feeding chute to eliminate roll-up door operation
- Reduce service levels to meet newly compacted volumes of waste and cardboard for additional savings



The design team at AtSource provided detailed, accurate drawings enabling the client to fully see and understand how the new waste and recycling system would function.

Through the implementation of an AtSource sealed compactor for waste collection and properly scheduled services, additional savings were achieved. Further, the area now presented a much better image as the area was clean and odor free. Street people now don't have access to the waste and non authorized activity in the area has been eliminated creating a safer environment for the owners of the building.

To learn more about the AtSource Advantage and how you can benefit from one of the nation's most experienced waste & recycling system experts, call today for a no obligation waste & recycling review.

Site Images

Before



After

